

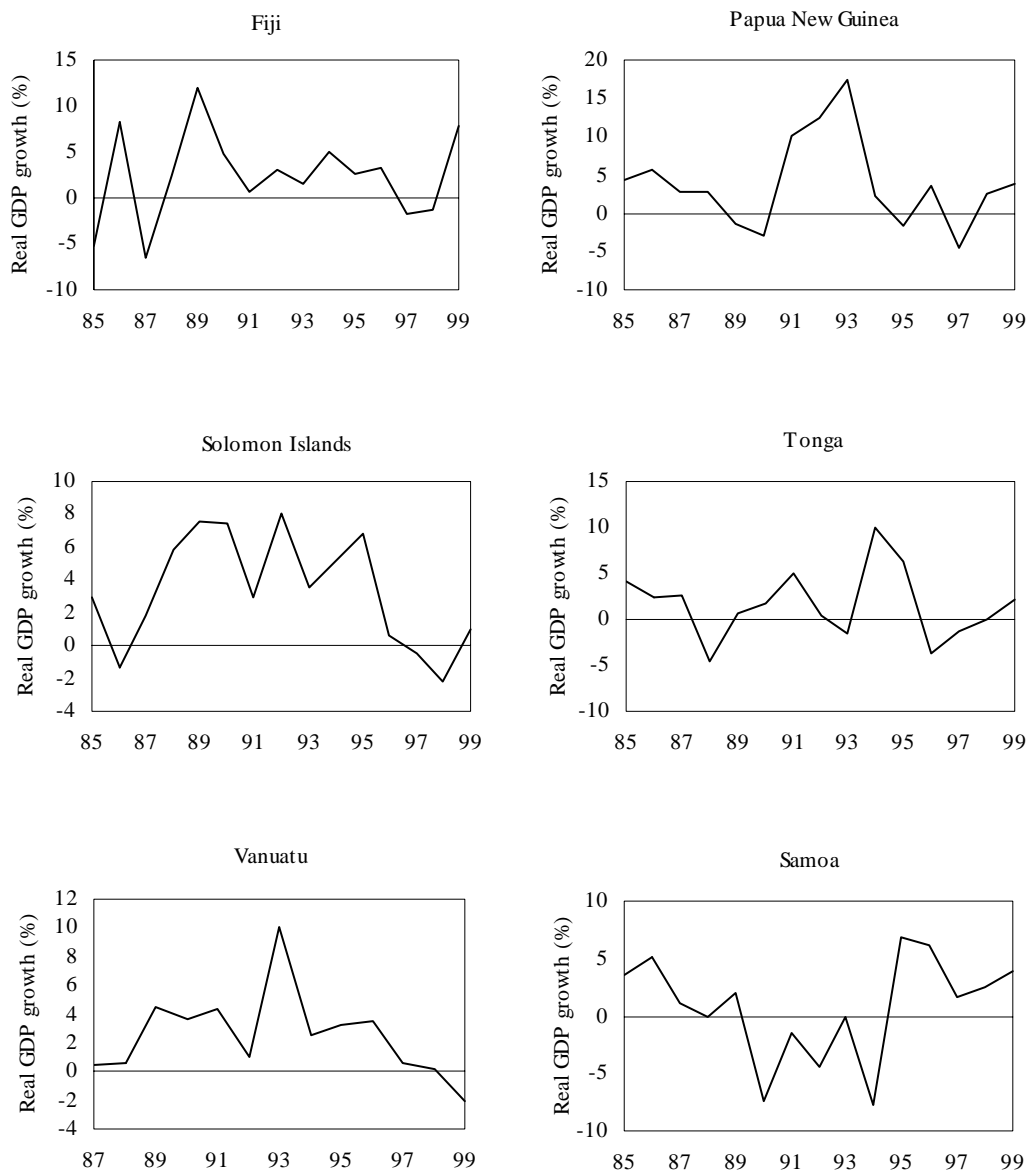
South Pacific statistics at a glance

Figure

1	Real GDP growth rates, 1985–99	182
2	Consumer price quarterly indexes, 1993–99	183
3	Growth in merchandise trade, 1994–98	184
4	Current account balance, 1994–99	185
5	Real GDP growth per capita, 1994–99	186
6	Quarterly interest rates, 1993–99	187
7	Exchange rates, 1986–99	188



Figure 1 Real GDP growth rates, 1985–99 (per cent)

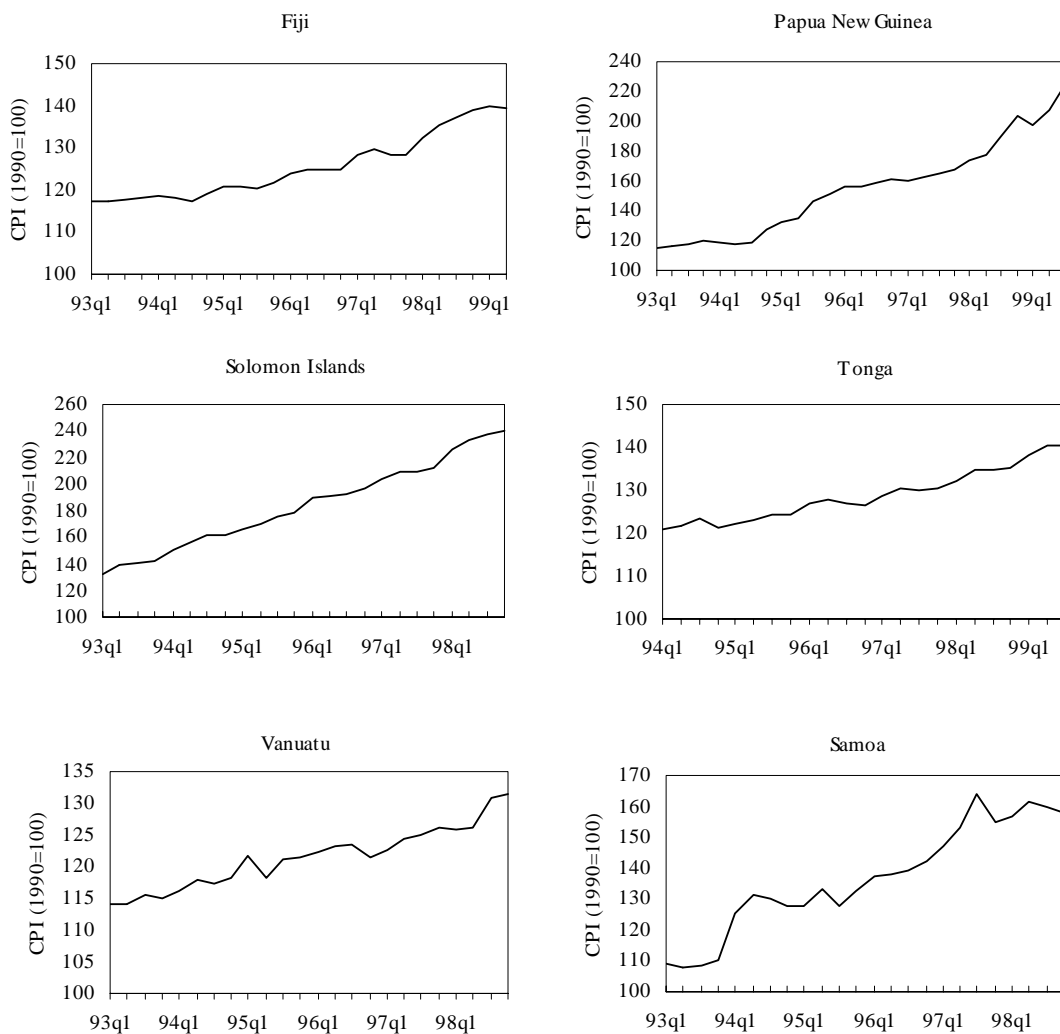


Notes: Fiji, Solomon Islands and Tonga data calculated at constant factor cost, Vanuatu and Western Samoa at constant market prices and Papua New Guinea at constant purchaser's value.

Source: Data prior to 1994 from the South Pacific Economic and Social Database, The Australian National University; data from 1994 from Asian Development Bank, *Asian Development Outlook 2000*, Manila.



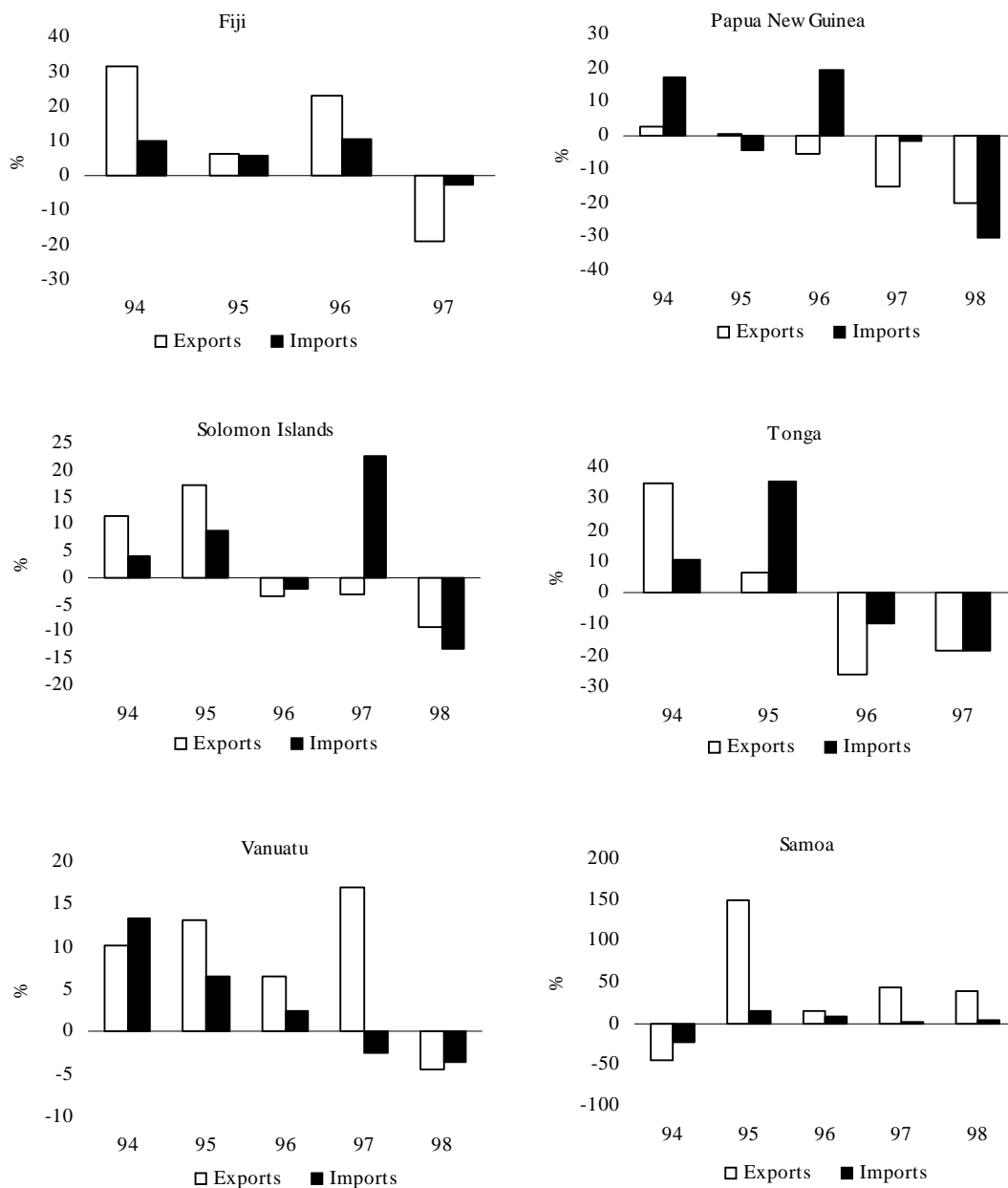
Figure 2 Consumer price quarterly indexes, 1993–99 (1990=100)



Source: International Monetary Fund, *International Financial Statistics*, Washington, DC.



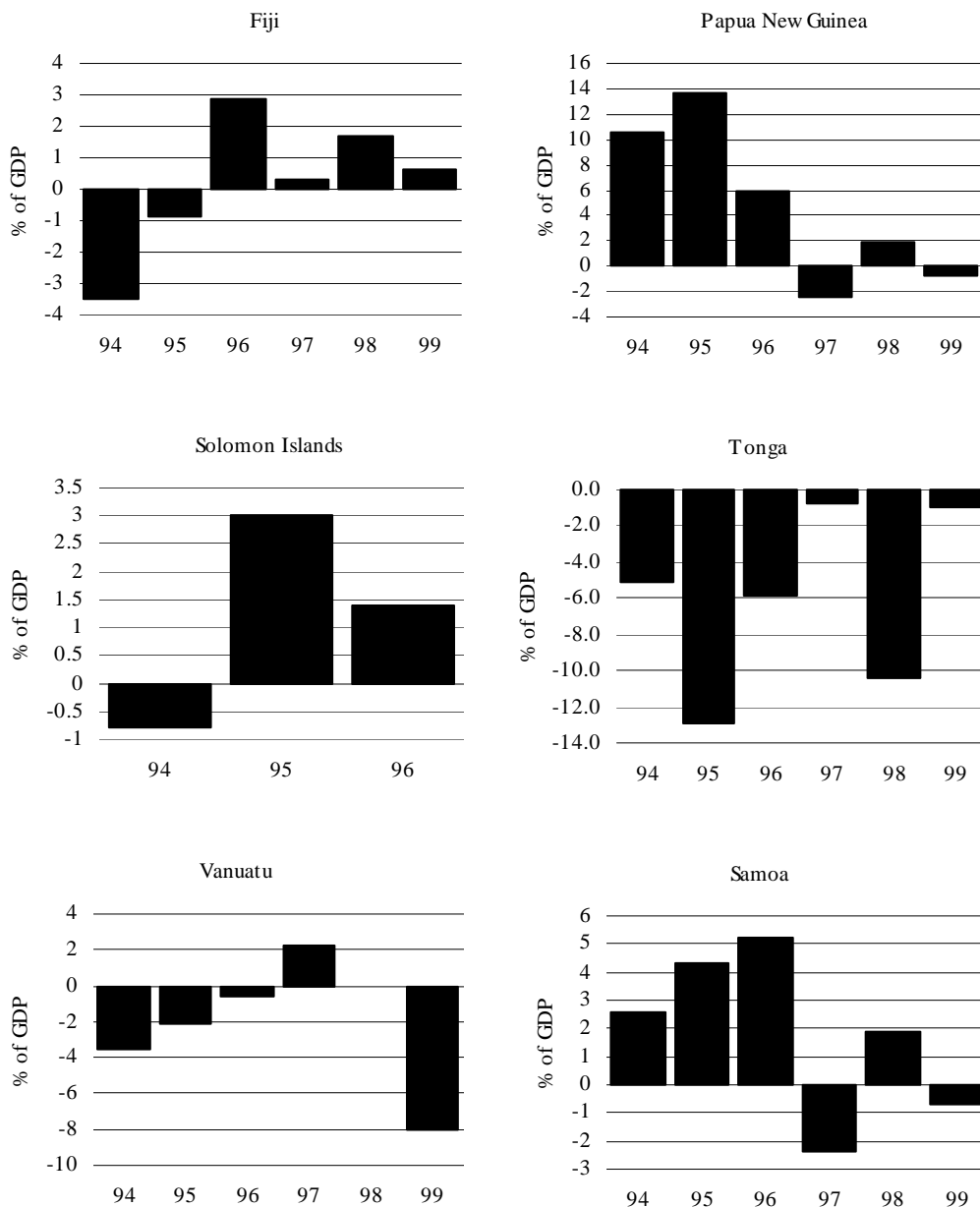
Figure 3 Growth in merchandise trade, 1994–98 (per cent)



Note: Data for Samoa and Tonga refer to financial years; data for other economies refer to calendar years.
 Source: Asian Development Bank, *Asian Development Outlook 2000*, Manila.



Figure 4 Current account balance, 1994–99 (per cent of GDP)

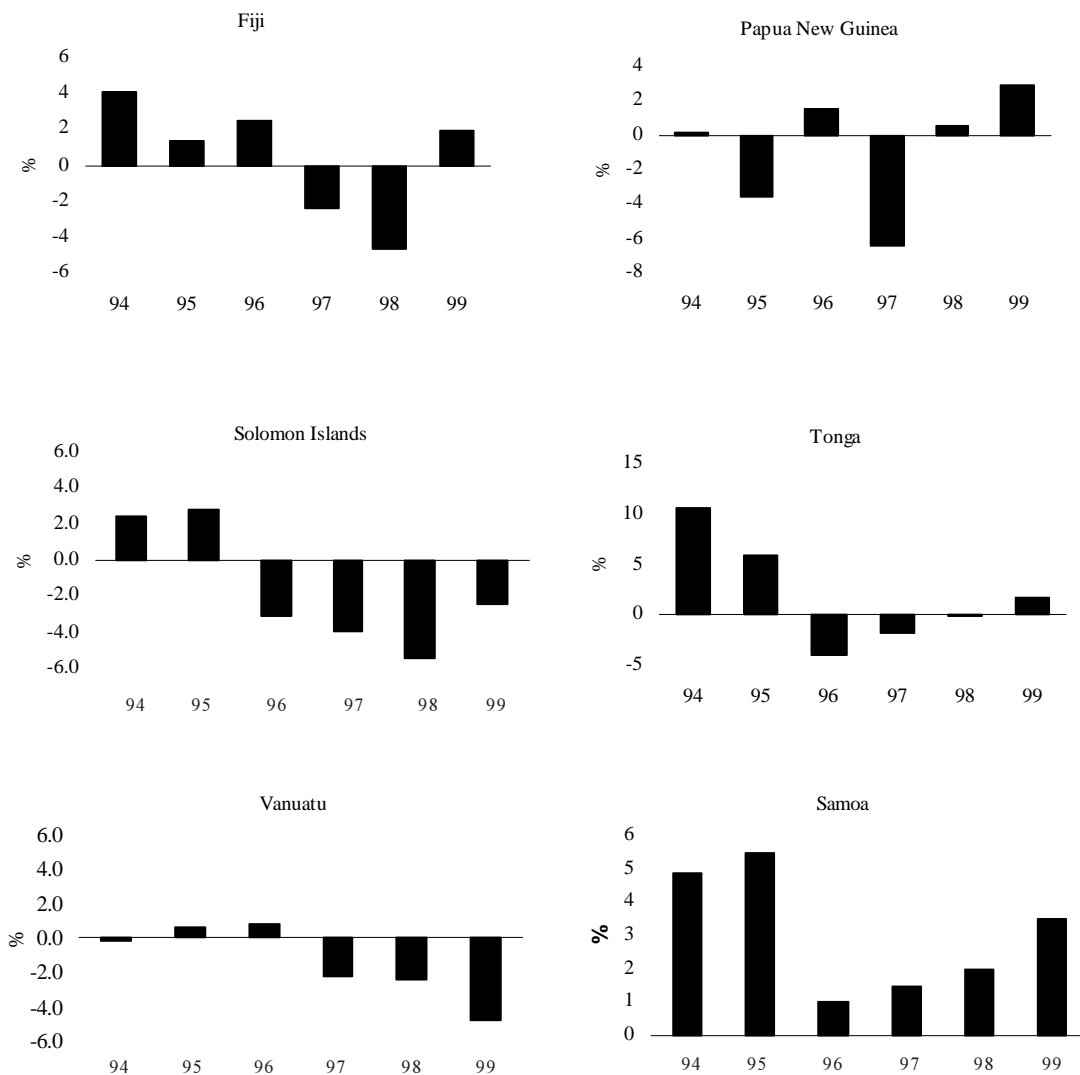


Notes: Fiji, Solomon Islands and Tonga data calculated at constant factor cost, Vanuatu and Western Samoa at constant market prices and Papua New Guinea at constant purchaser's value. Data for Samoa and Tonga refer to financial years; data for other economies refer to calendar years.

Source: Asian Development Bank, *Asian Development Outlook 2000*, Manila.



Figure 5 Real GDP growth per capita, 1994–99 (per cent)

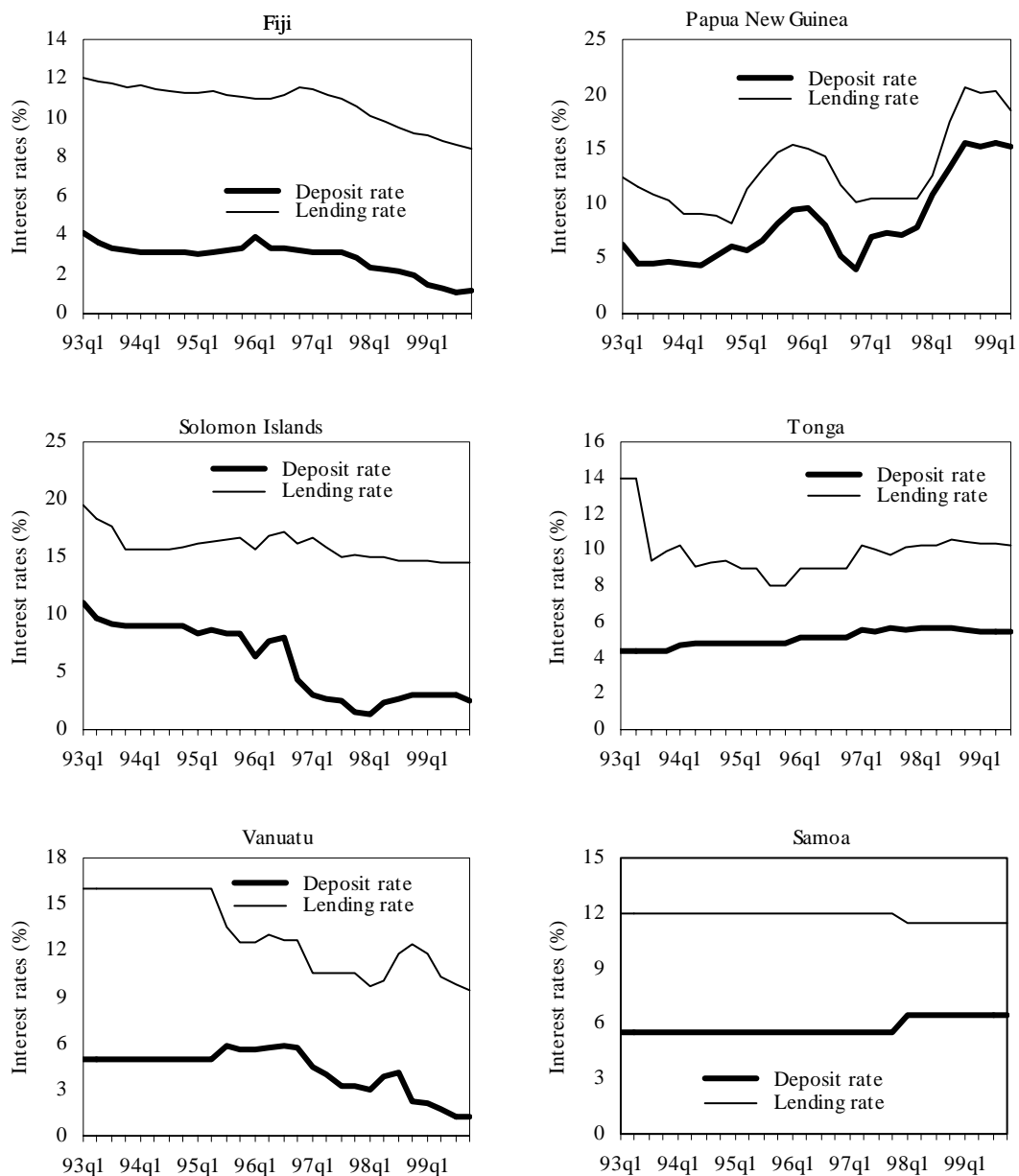


Notes: Fiji, Solomon Islands and Tonga data calculated at constant factor cost, Vanuatu and Western Samoa at constant market prices and Papua New Guinea at constant purchaser's value. Data for Samoa and Tonga refer to financial years; data for other economies refer to calendar years.

Source: Asian Development Bank, *Asian Development Outlook 2000*, Manila.



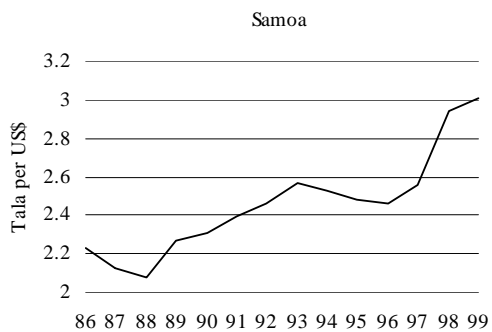
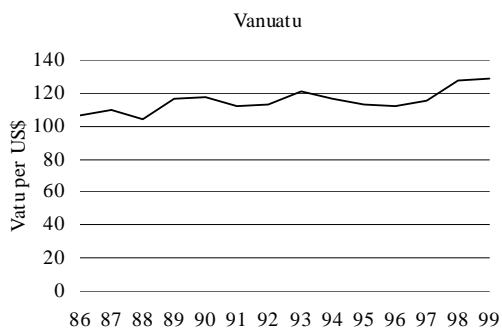
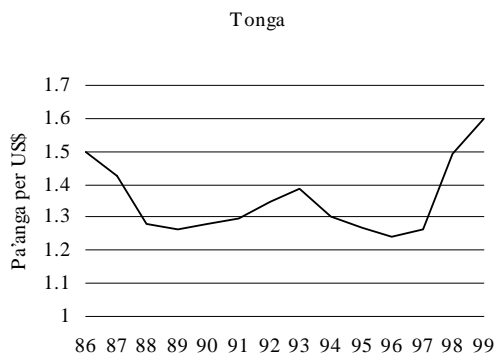
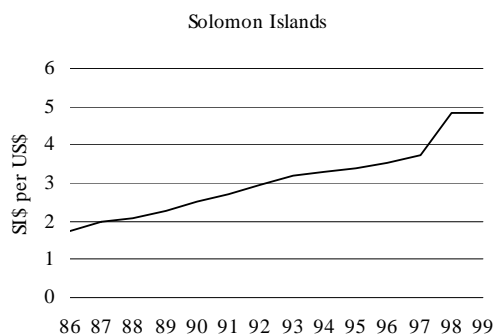
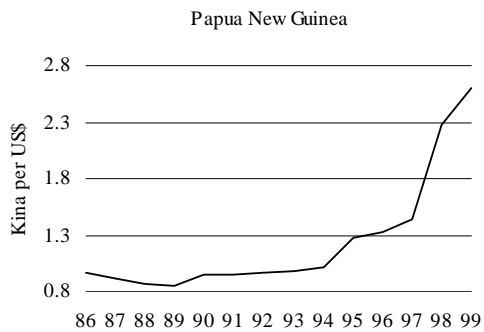
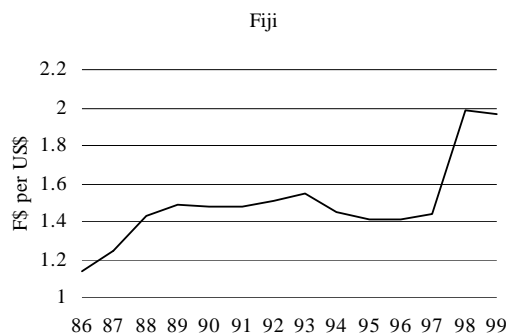
Figure 6 Quarterly interest rates, 1993–99 (per cent)



Source: International Monetary Fund, *International Financial Statistics*, Washington, DC.



Figure 7 Exchange rates, 1986–99



Source: 1999 figures for Papua New Guinea and Tonga from Asian Development Bank, *Asian Development Outlook*, Manila; all other figures from International Monetary Fund, *International Financial Statistics*, Washington, DC.