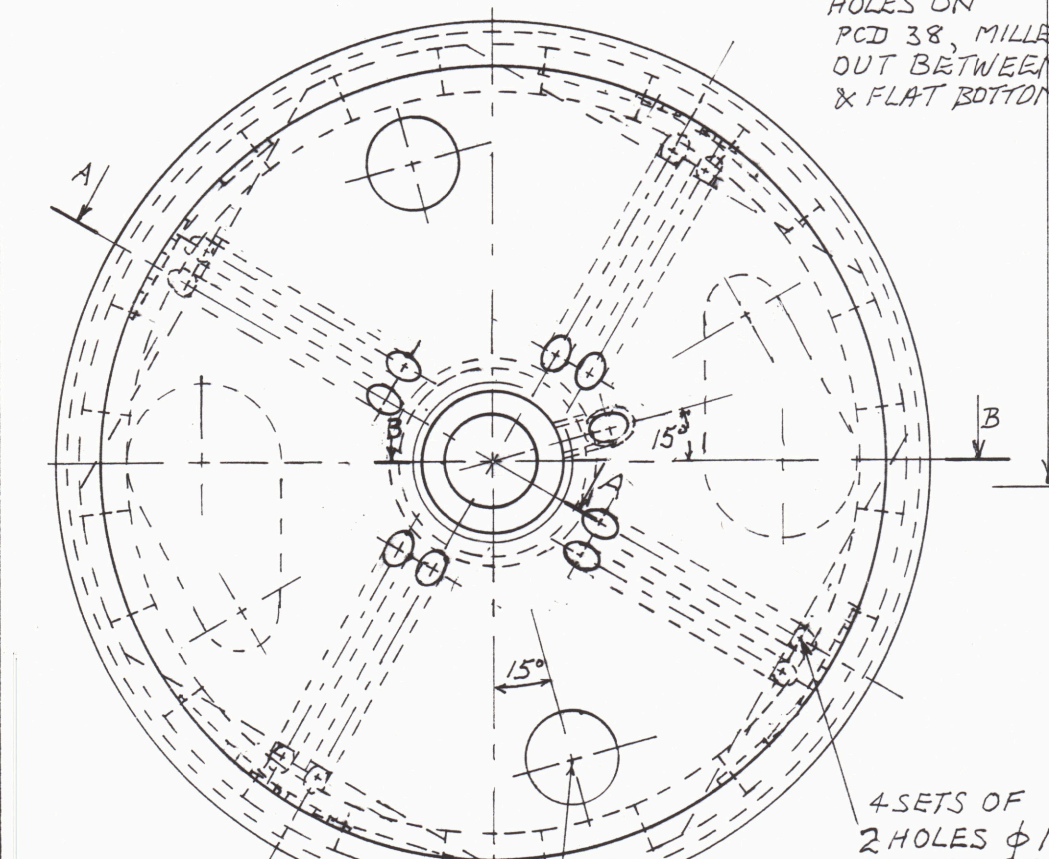
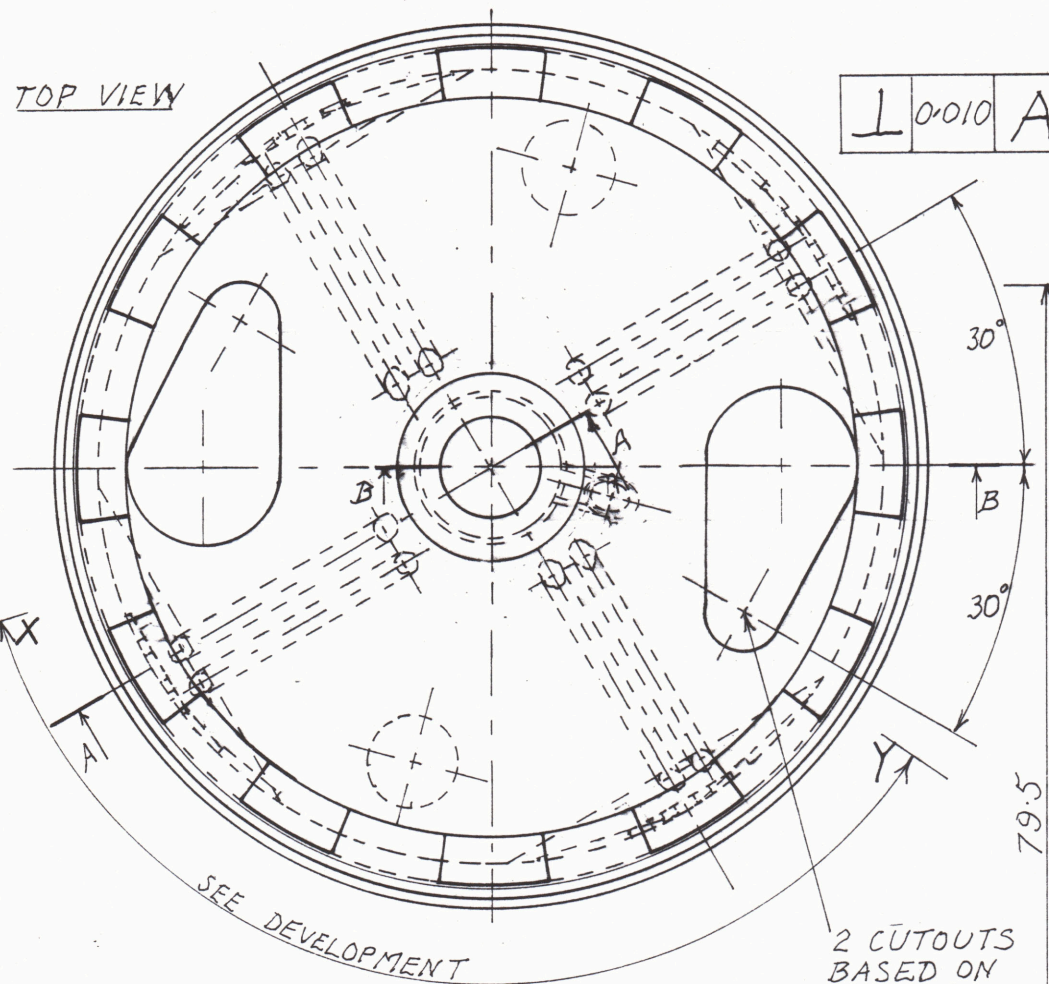
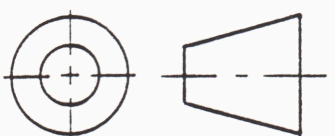


TOP VIEW



BOTTOM VIEW

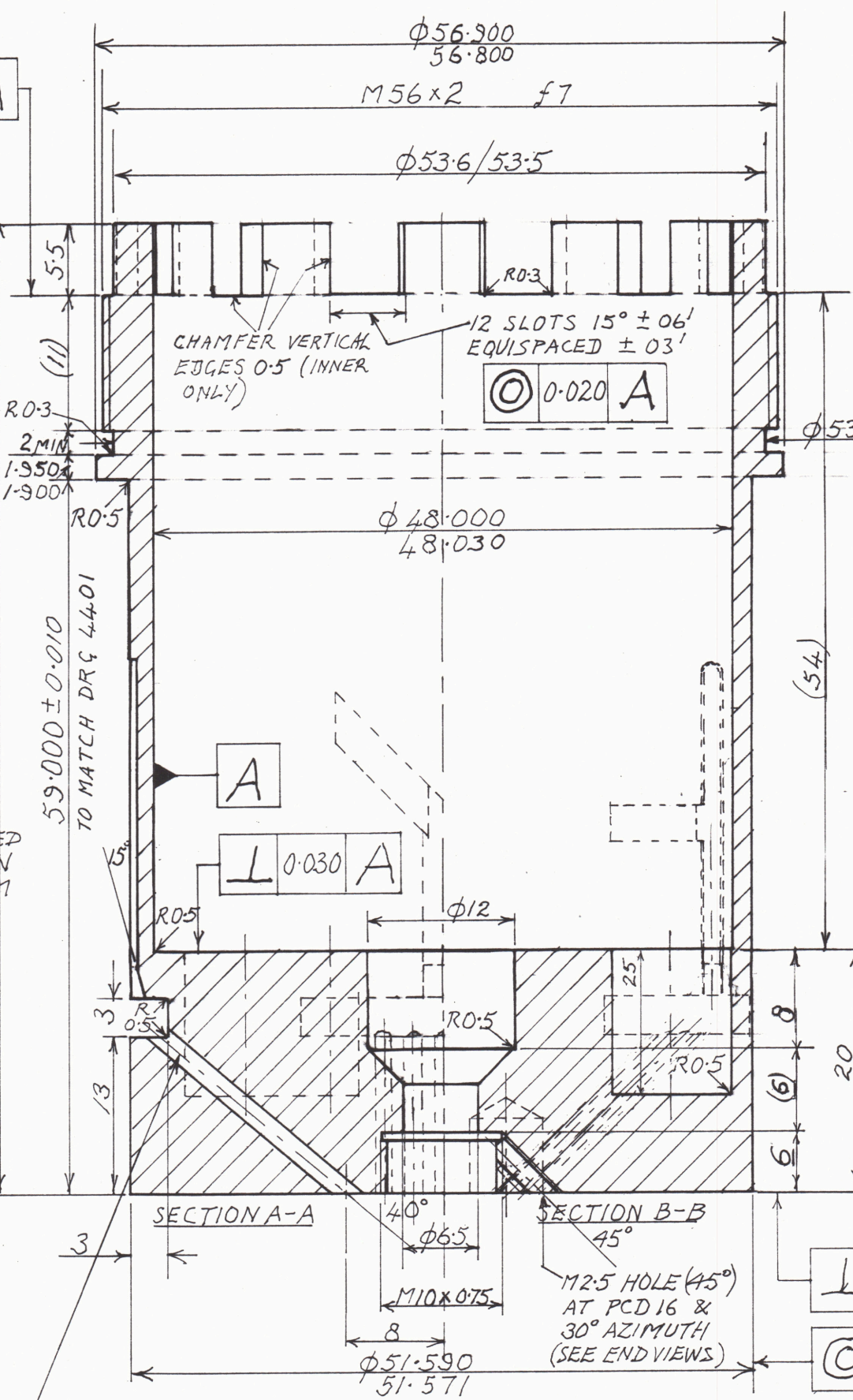


L 0.010 A

2 CUTOUTS BASED ON Ø10 & Ø5 HOLES ON PCD 38, MILLED OUT BETWEEN & FLAT BOTTOM

4 SETS OF 2 HOLES Ø1.7 SPACED 2.5 POSITIONED ASYMMETRIC AS SHOWN

2 HOLES Ø6 EQUISPACED ON PCD 40, DEPTH 6 & FITTED WITH EASILY REMOVABLE LOCATION PINS (L140 STEEL) LENGTH 11 TO MATCH DRG 4401

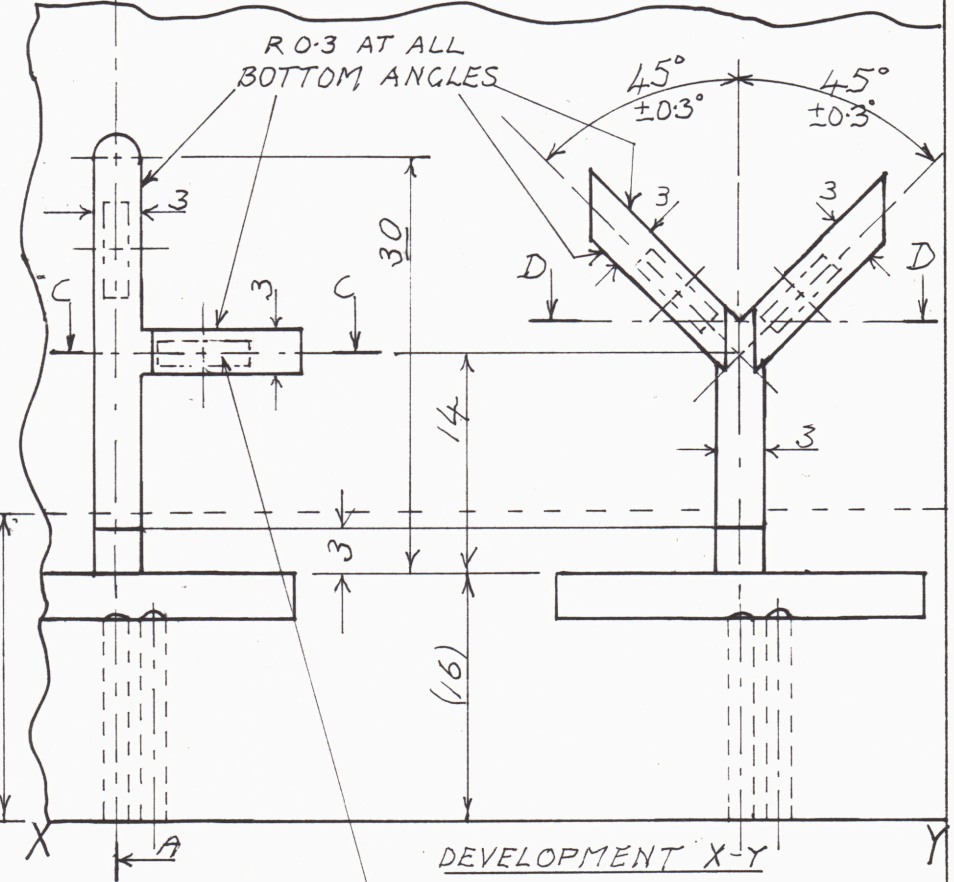
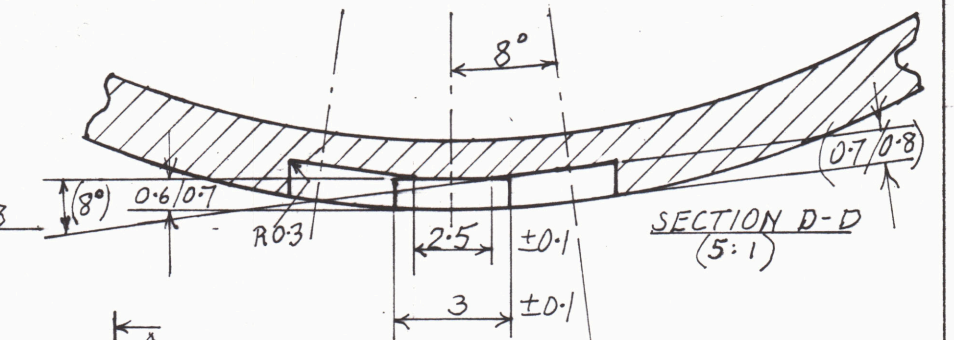
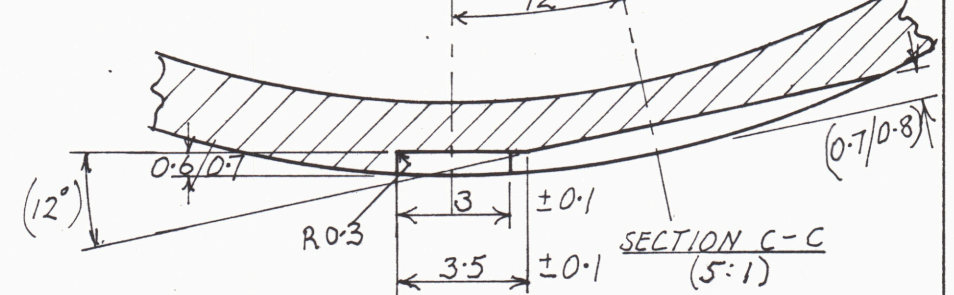


DIMENSIONS IN MILLIMETERS - DO NOT SCALE

TOLERANCES ± 0.3 UNLESS STATED

MATERIAL: ASSAB CALMAX HRC 55 ± 2

ACN 008 644 273



L 0.010 A

Ø 0.010 A

APPROX POSITIONS FOR STRAIN GAUGES EA-06-125BZ-350-L BOTTOMS OF GROOVES TO BE FREE OF MACHINING MARKS FOR STICKING GAUGES

PATERSON INSTRUMENTS PTY LTD

HPT TESTING MACHINE PRESSURE VESSEL ASSEMBLY STRAIN GAUGE LOAD CELL - DETAIL (2)

A3	SCALE 2:1	DATE MAR 96	DRAWING NO 4402
----	--------------	----------------	--------------------