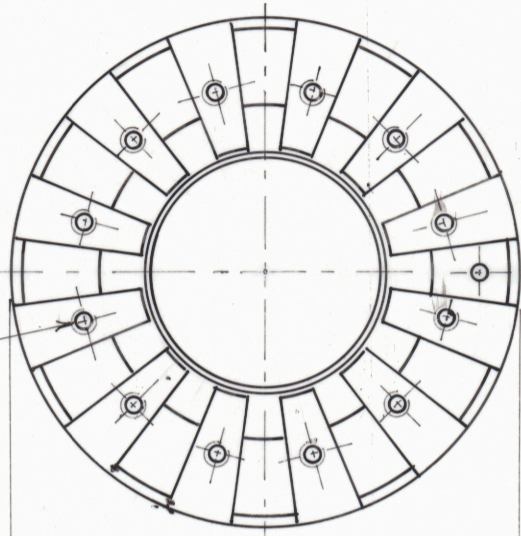


FIT PIN $\phi 1$ ON PCD 62.4
TO PROJECT 15/2.0

12 HOLES M3
X 8 DEEP
ON PCD 49



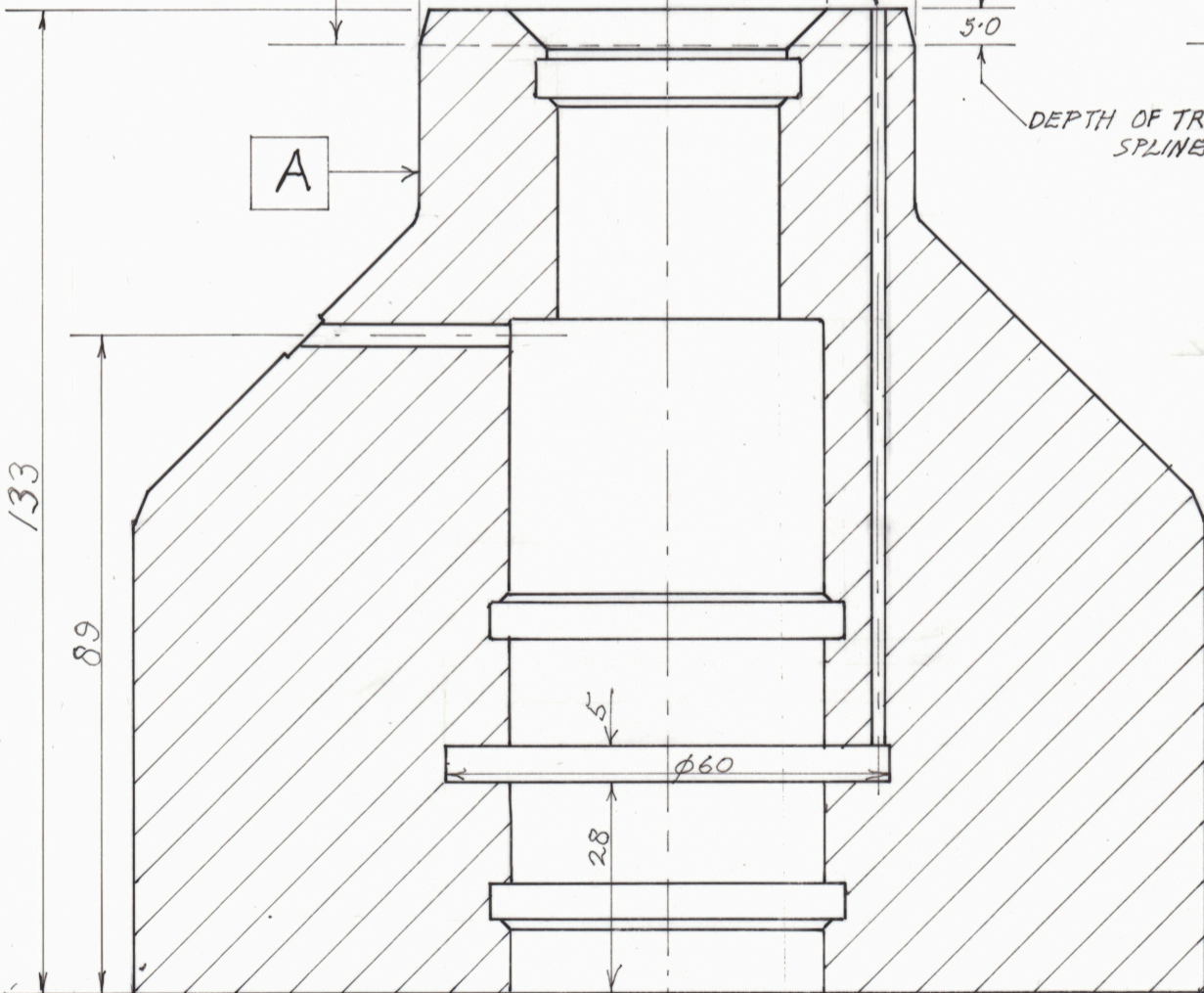
12 TRANSVERSE
SPLINE GROOVES
14° 50' ± 03'
EQUISPACED ± 03'

⓪ 0.020 A

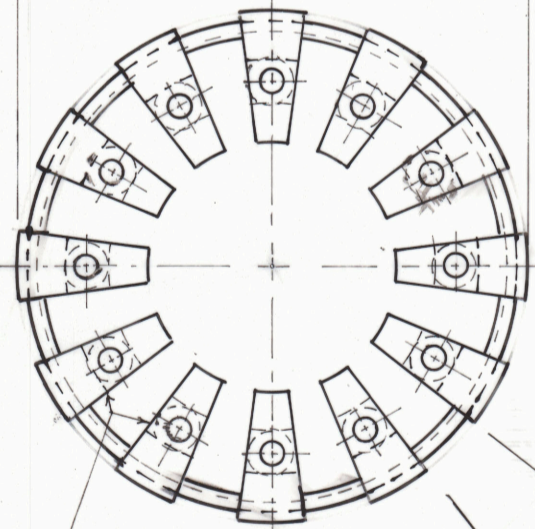
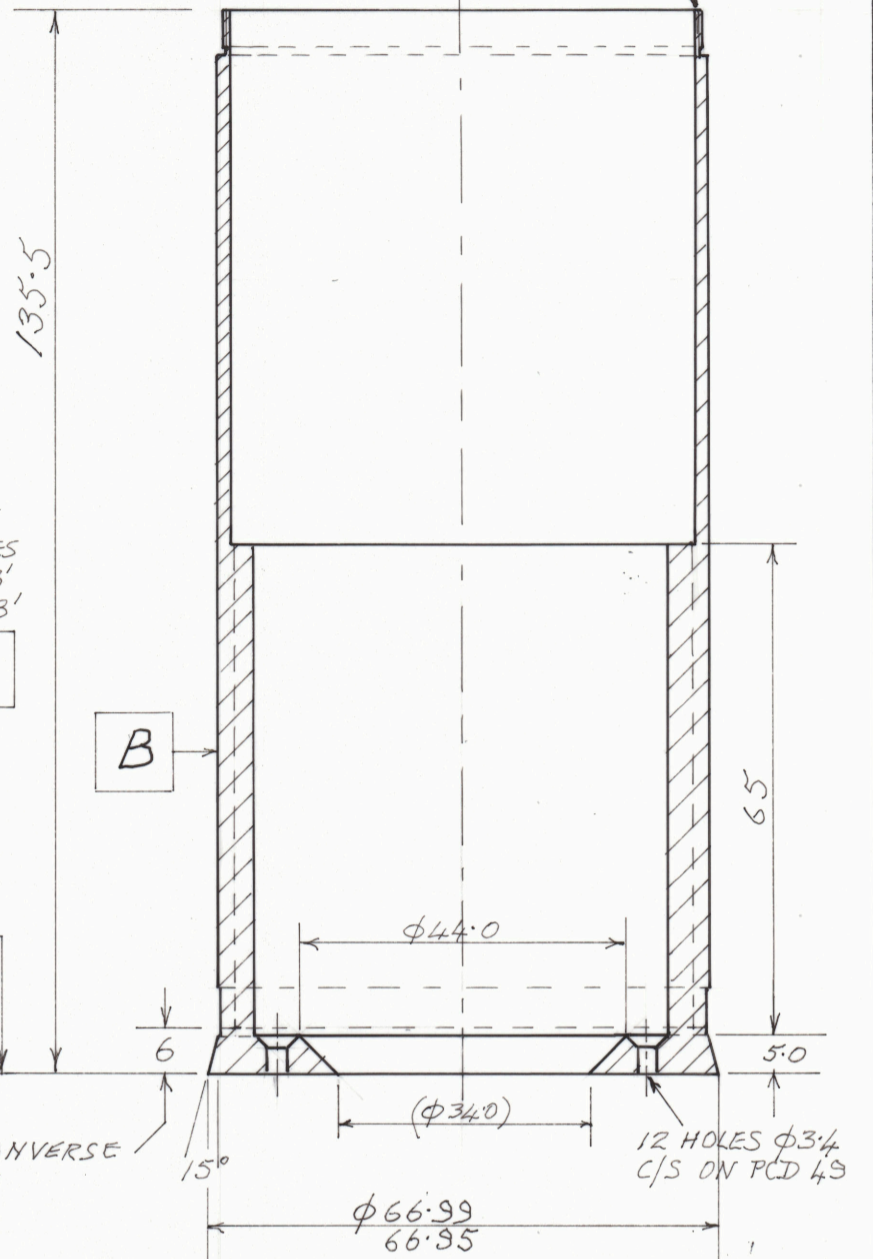
HOLE $\phi 2$
ON PCD 57

L 0.020 A

L 0.020 B



DEPTH OF TRANSVERSE
SPLINES



CHAMFER OUTSIDE
EDGES 0.5

12 SPLINE GROOVES
AXIAL & TRANSVERSE
15° ± 06'
EQUISPACED ± 03'

⓪ 0.020 B

OTHER DIMENSIONS AS ON ASI DRG 170-51-56161

DIMENSIONS IN MILLIMETRES
DO NOT SCALE

TOLERANCE ± UNLESS STATED

~~EXCLUSIVELY LICENCED TO
PATERSON INSTRUMENTS PTY LTD~~

~~ANU RESEARCH SCHOOL OF EARTH SCIENCES~~

HIGH PRESSURE/TEMPERATURE TESTING MACHINE
MODIFICATIONS TO BOTTOM PLUG 4301

A3

SCALE
1:1

DATE
DEC 1999

DRAWING NO 4301E