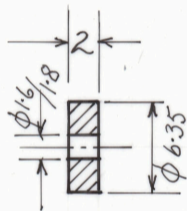
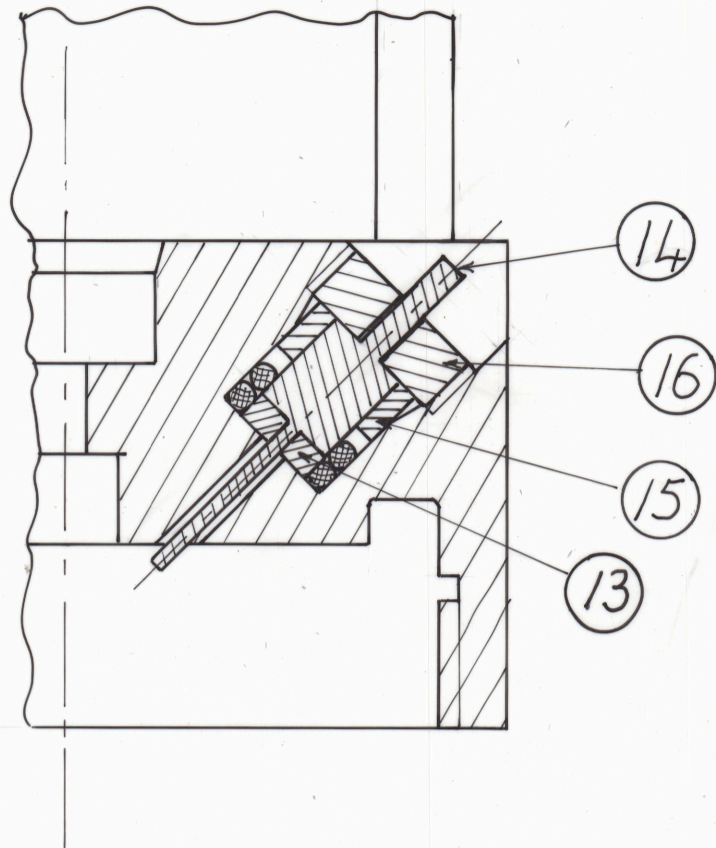
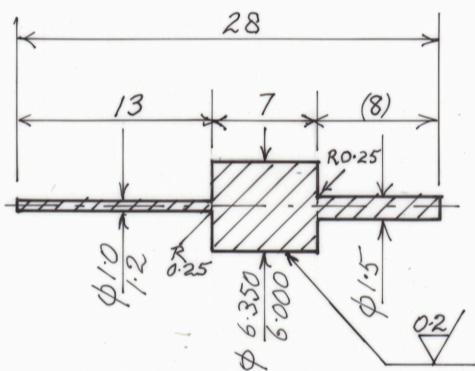


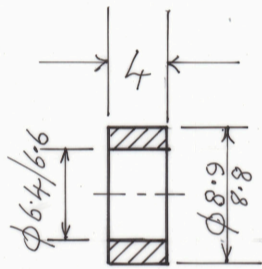
12 ASSAB 718  
AS RECEIVED



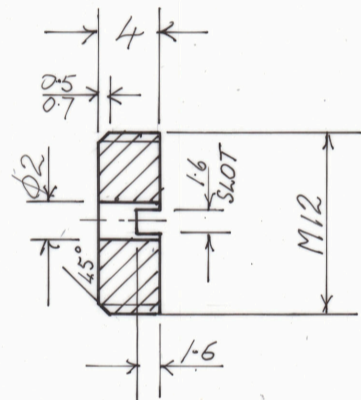
13 PSZ  
4 OFF



14 ASSAB 709  
OR EN 25  
4 OFF



15 NYLON OR  
OTHER INSULATOR  
4 OFF



16 NYLON OR SIMILAR  
4 OFF

**FOR TORSION LOAD CELL:**

6A PSZ OD 6 ID 2.7 THICKNESS  $0.5 \pm 0.05$  24 OFF

6B ASSAB CALMAX OD 6 ID 2.7 THICKNESS  
(AS RECEIVED)  $1.0 \pm 0.05$  3 OFF  
 $1.45 \pm 0.05$  6 OFF  
 $2.1 \pm 0.05$  3 OFF  
 $3.8 \pm 0.05$  3 OFF

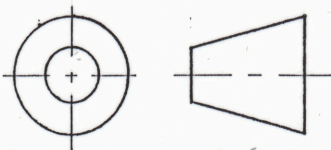
6C PTFE OR SIMILAR OD 3.2 ID 2.7 THICKNESS 2.4 12 OFF

7A HT SOCKET HEAD CAP SCREWS M3 - REDUCE  $\phi$  TO 2.5 AND ADD M2.5 THREAD X 5 MM } 3 OFF 19.5  $\pm 0.2$  LONG  
MACHINE FACE OF HEAD SQUARE TO SHANK & UNDERCUT SLIGHTLY } 3 OFF 13.0  $\pm 0.2$  LONG

7B HT SOCKET HEAD CAP SCREWS M 2.5 X 6 LONG 3 OFF

DIMENSIONS IN MILLIMETRES  
DO NOT SCALE

TOLERANCES  $\pm 0.3$  UNLESS STATED



ACN 008 644 273

PATERSON INSTRUMENTS PTY LTD

HPT TESTING MACHINE  
AXIAL LOAD CELL

PARTS 12 TO 16 - FITTINGS

A3

SCALE  
2:1

DATE  
NOV 1993

DRAWING NO 4224

AM. NOV 1994