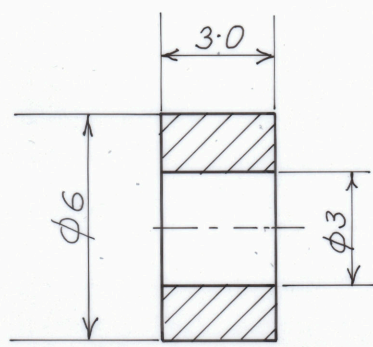
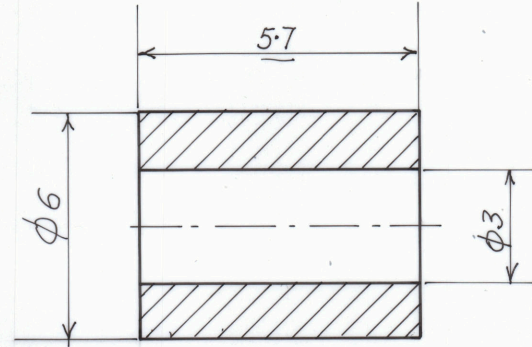


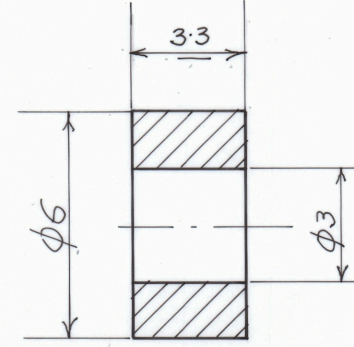
5 ALUMINA (AL23 TUBE)
6 REQD
END FACES PARALLEL TO 0.01 FOR 5 TO 8



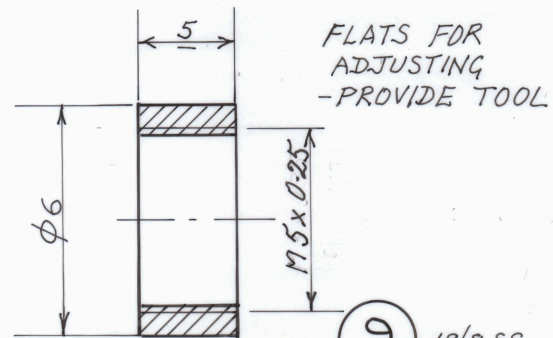
6 ZIRCONIA (ZR23 TUBE)
18 REQD



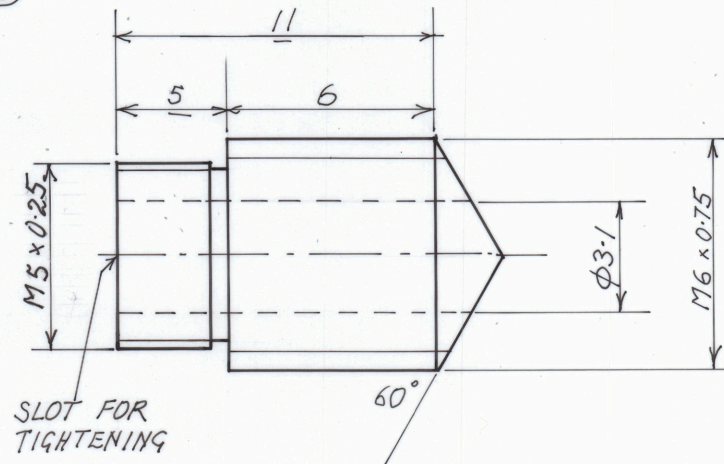
7 ZIRCONIA (ZR23 TUBE)
6 REQD



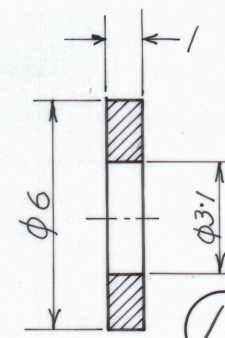
8 ALUMINA (AL23 TUBE)
6 REQD



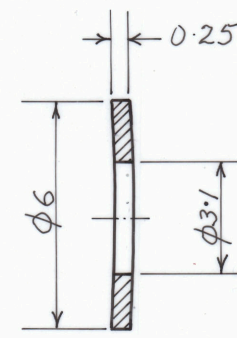
9 18/8 SS
4 REQD



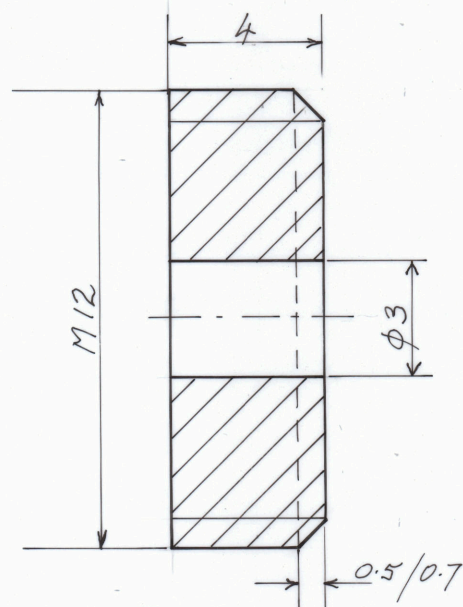
10 18/8 SS
4 REQD



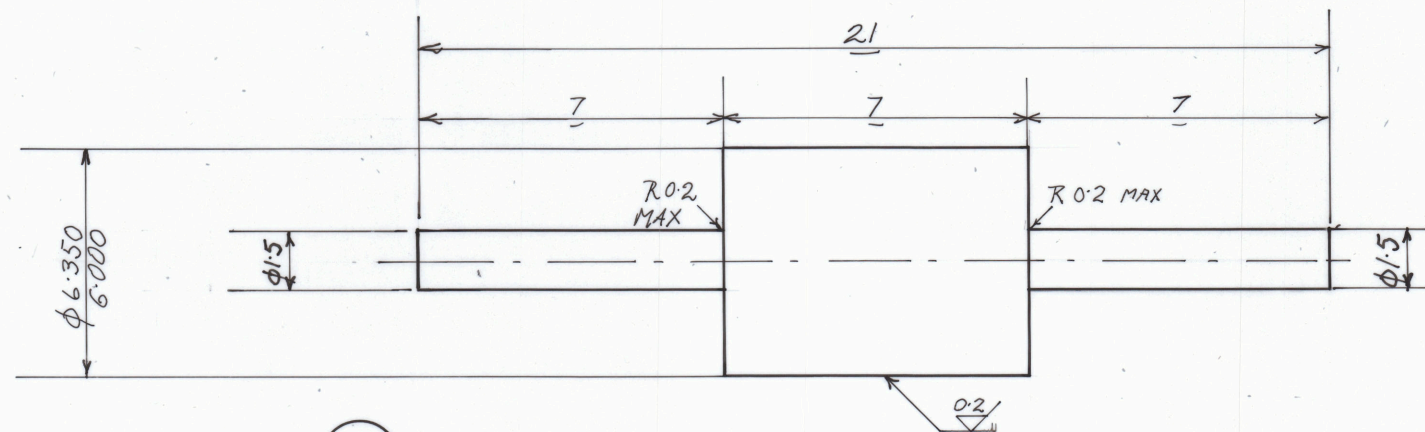
11 18/8 SS
4 REQD



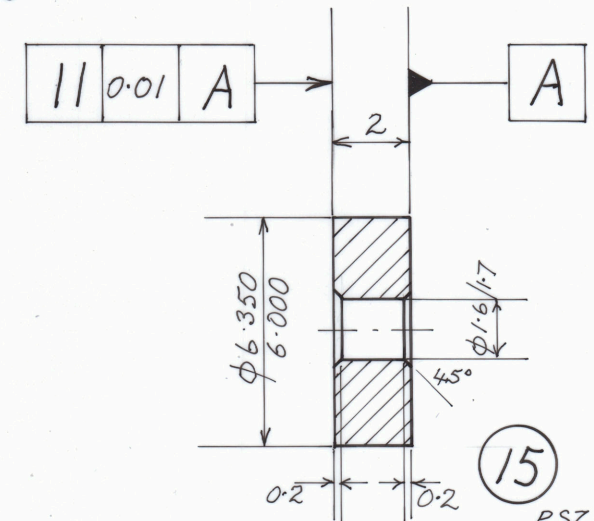
12 SPRING WASHER
4 REQD
BE COPPER
HT 335°C
2 HR AFTER
SHAPING



13 NYLON
OR SIMILAR
PROVIDE SLOT FOR TOOL
OPPOSITE CHAMFER

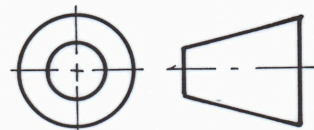


14 ASSAB 709
OR EN 25
4 REQD



15 PSZ
4 REQD

+ 16 OD 8.9/8.8
ID 6.4/6.5
L 4



DIMENSIONS IN MILLIMETRES
DO NOT SCALE
TOLERANCES ± UNLESS STATED

ANU RESEARCH SCHOOL OF EARTH SCIENCES
HIGH PRESSURE/TEMPERATURE TESTING MACHINE
CAPACITANCE LOAD CELL
DETAILS 5 TO 15 - FITTINGS

A3	SCALE 5:1	DATE DEC 1990	DRAWING NO 4203
----	--------------	------------------	-----------------