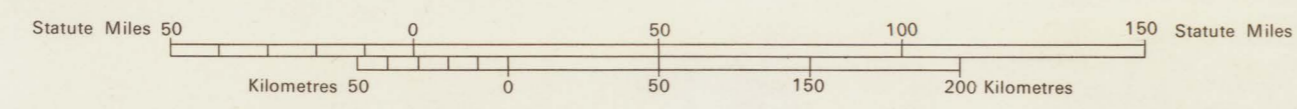


AUSTRALIA S.E. SHEET
TRIBAL BOUNDARIES MAP



Originally published in the United States as part of Norman B. Tindale, *Aboriginal Tribes of Australia* by the University of California Press, Berkeley, Los Angeles, London, and in Australia by Australian National University Press. Copyright © 1974 by The Regents of the University of California.



Eastern limit of
circumcision rite

Eastern limit of
circumcision rite

Archaeological (pre 5000 BP) only

- 1 NGANGURUKU
- 2 NGARALTA
- 3 WARKI
- 4 PORTAULUN
- 5 JARILDEKALD
- 6 RAMINDJERI

- DALLA - small tribes
- 1 DALLA
 - 2 DUNGDAU
 - 3 DALBO
 - 4 DUNGIBARA
 - 5 GARUMGA

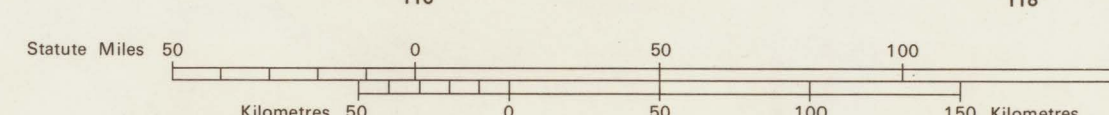
Unoccupied

Archaeological
relics only



- 1 WOGAIT
- 2 DJERAIT
- 3 AMJANGAL
- 4 PONGAPONGA
- 5 NGOLOKWANGGA
- 6 JUNGGOR
- 7 MENTHANGAL
- 8 MARITHEL
- 9 MARINUNGO
- 10 MADNGELA
- 11 MARJEDI
- 12 MARIAMO
- 13 MARIAN
- 14 MARIJABIN
- 15 MAGATIGE
- 16 MARINGAR
- 17 KAMOR
- 18 MARIMANINDJI

AUSTRALIA N.W. SHEET
TRIBAL BOUNDARIES MAP



Originally published in the United States as part of Norman B. Tindale, *Aboriginal Tribes of Australia* by the University of California Press, Berkeley, Los Angeles, London, and in Australia by Australian National University Press.
Copyright © 1974 by The Regents of the University of California.



AUSTRALIA N.E. SHEET
TRIBAL BOUNDARIES MAP

Originally published in the United States as part of Norman B. Tindale, *Aboriginal Tribes of Australia* by the University of California Press, Berkeley, Los Angeles, London, and in Australia by Australian National University Press.
Copyright © 1974 by The Regents of the University of California.

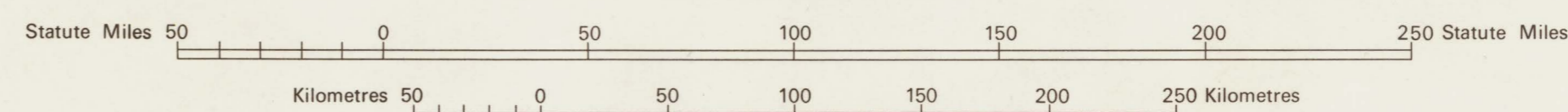


TRIBAL BOUNDARIES IN ABORIGINAL AUSTRALIA

NORMAN B. TINDALE

Geographic II Spelling as used by Dr. N. B. Tindale in his book
"Aboriginal Tribes of Australia" published by University of California Press, 1974.

▬▬▬▬▬▬▬ Boundary of subincision rite
▬▬▬▬▬▬▬ Boundary of circumcision rite



SIMPLE CONIC PROJECTION WITH STANDARD PARALLELS 18°S AND 36°S

Tribal boundaries drawn by Winifred Munford on a base map produced by the Division of National Mapping,
Department of National Development, Canberra, Australia.